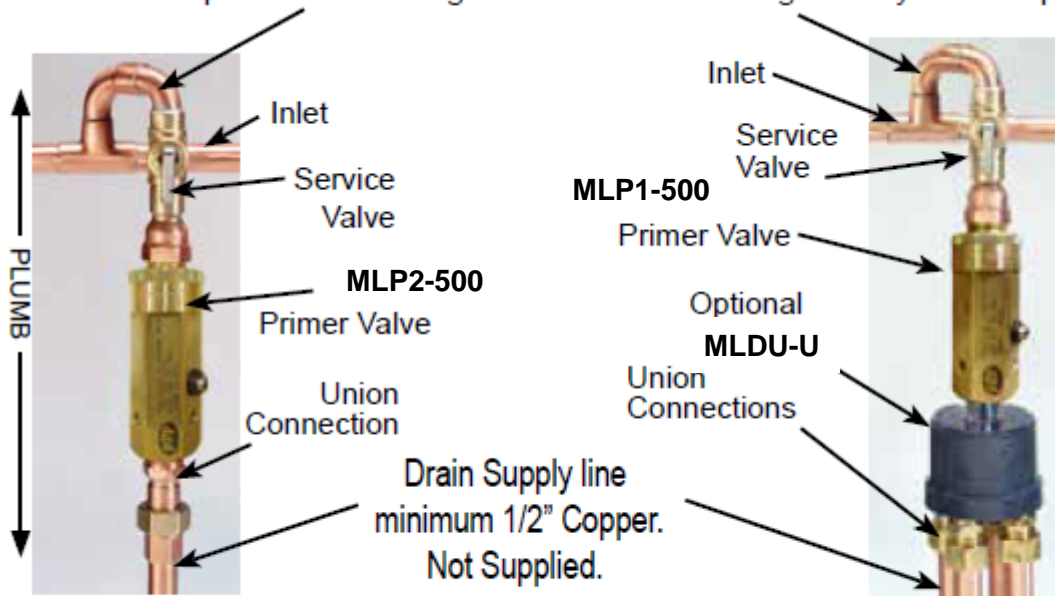


Installation Instructions

1. Flush line prior to installation.
2. Use ribbon pipe seal tape - ONLY.
3. Install valve plumb using caution to not over tighten. Tightening to more than 55ft.lbs. can damage valve and void the warranty. Do not tighten on hex.
4. Effective operating range 20 to 80 PSIG (138 to 552 kpa). Min. discharge rate for MLP1-500, is 71.25 ml/m at 20 PSIG. Min. discharge rate for MLP2-500 is 56.25 ml/m at 20 PSIG.
5. Do not subject Trap Primer Valve to pressure in excess of 125 PSI.
6. Failure to follow these instructions will make the product warranty null and void.

Use debris loop to ensure foreign matter from entering directly into the primer.



The Priming valve must have min. elevation of 12" (305mm) above the finished floor. Allow 1 foot of elevation for every 20 feet of distance run for floor drain make-up line.

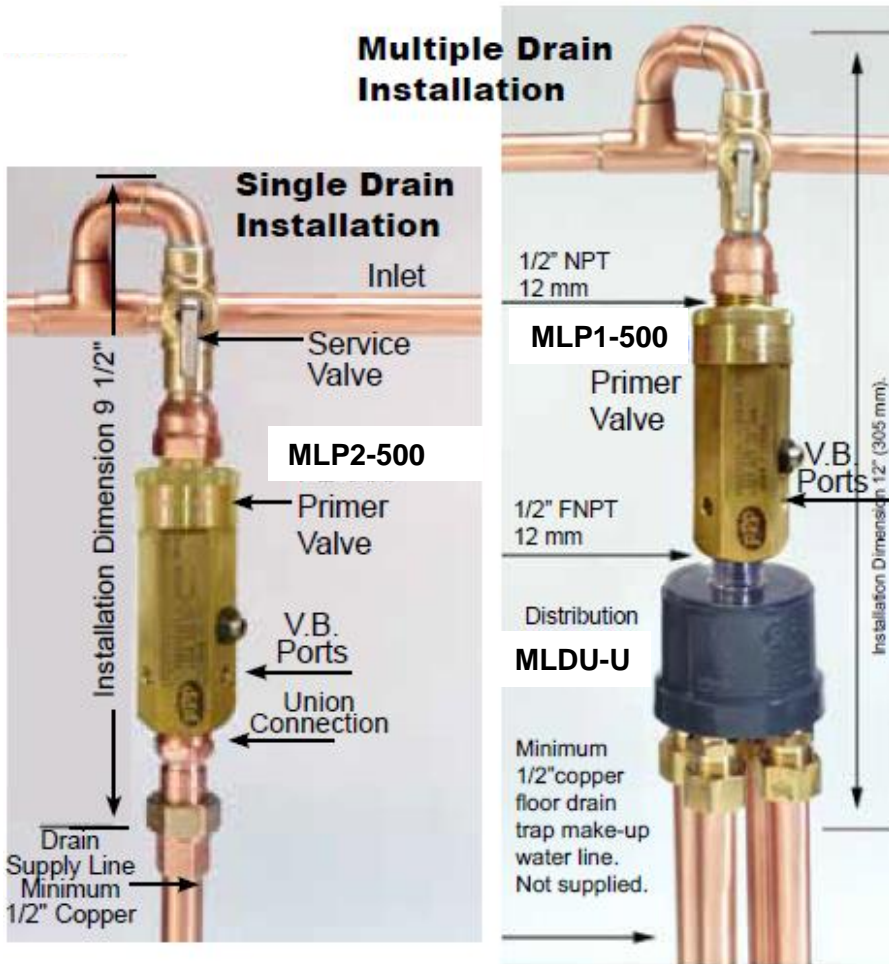
INSTALLATION TIPS

- To adjust: Turn adjusting screw counter clockwise until a steady flow is produced.
- Turn adjusting screw clockwise until dripping just stops. Primer is now set to line pressure.
- Cycle primer at least (5) times to insure proper activity.
- The Trap Primer must be installed on a cold fresh water line of 1 1/2" dia. or less.
- Must be installed near a fixture that creates a minimum of 10 PSIG pressure drop.
- Do not install on water heater line due to insufficient pressure drop.
- Do not subject Trap Primer Valve to pressure in excess of 125 psi.
- All drain supply lines must be clear to assure proper discharge to trap. Failure to do so could result in water discharge through air gap port.

Need Help? Please call our toll-free customer service line at 1-225-295-4212 for additional assistance or service.



INSTALLATION REQUIREMENTS



This valve is designed to be installed on 1/2" to 1 1/2" cold water line, feeding a flush valve or other open and closing valve supply line that is frequently used.

Trap Primer valve makeup line to floor drain is recommended to be a minimum of 12" off the finished floor before a 90° elbow can be installed.

The furthest recommended distance of makeup line is 20' to the floor drain.

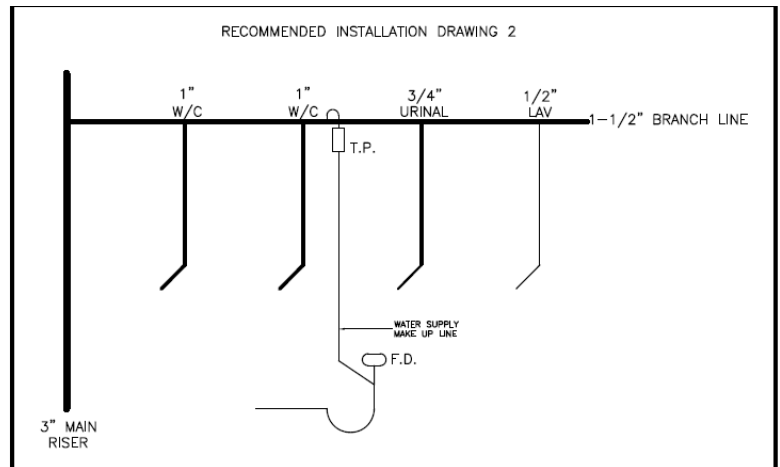
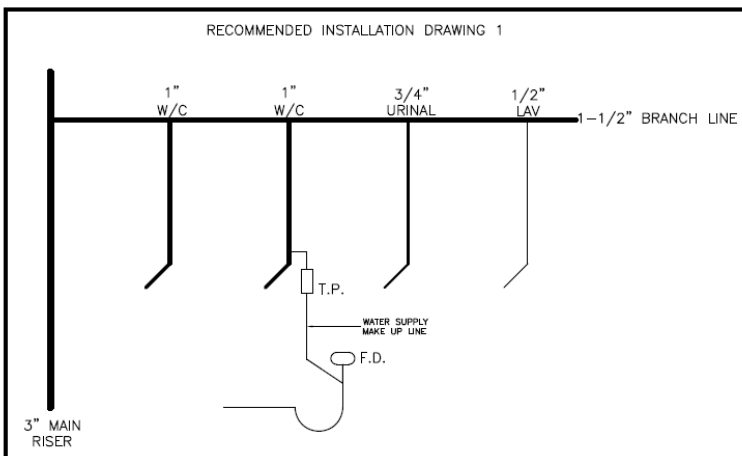
Trap primer make up line must have continuous slope to the floor drain (consult local code requirements).

Install with a shut off valve for servicing on the inlet side and a union connection on the outlet side.

The valve must be installed level.

If using the distribution unit the clear plastic cover must be used.

Do not subject the valve to rough in pressure test.





Mainline products manufactured by Precision Plumbing Products will be covered by Precision Plumbing Products' warranty as follows:

PRECISION PLUMBING PRODUCTS WARRANTY

Precision Plumbing Products of Portland, Oregon (USA) warrants our manufactured products to be free from defects and workmanship under normal use and service. The sole and exclusive remedy for our manufactured products that do not conform to this limited and express warranty and our sole obligation under this limited and express warranty is to replace the defective part or product during the three year period after original installation. This warranty excludes any parts or products that are modified or improperly installed or installed where PH levels, chemical conditions or electrolysis prematurely degrade the product. We specifically disclaim any warranties or responsibility for defects due to quality, material, dimensional tolerances or quality control of any fitting or other third party supplied parts or components. **EXCLUSIONS OF ALL OTHER WARRANTIES INCLUDING IMPLIED WARRANTIES:** All other warranties, including the implied warranties of **MERCHANTABILITY** and fitness for a particular purpose, are **EXCLUDED** from this transaction and shall not apply to goods sold by us. The above warranties are in lieu of all other warranties and representations, express or implied, and all other obligations or liabilities on our part. We shall not be liable for consequential damages, loss of profit, interruption of business or any other special, incidental, or punitive damages suffered or sustained by Customer. Any part or products being returned under this warranty must have prior authorization by us. Any part or product received by us without a return of goods authorization will be returned to the shipper. All returned merchandise must be prepaid by shipper. Our personnel, including salespeople, as well as independent distributors and sales agents may have made oral statements about our products. Those statements are not warranties by us and should not be relied on by the buyer/customer/user. If you use this product, you are agreeing to this warranty contract between us. This writing constitutes the final expression of the parties and is the complete and exclusive statement of that contract for warranties.

*Effective July 1, 2023, due to an update in California law, the start date for product warranties will now be aligned with the date of delivery of the product. This change is for all Mainline products purchased on or after July 1, 2023 by California consumers. (California Legislative Information AB-2912)

