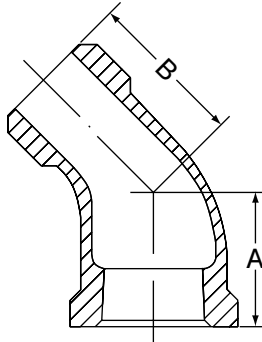


Class 150 (Standard)

FIG. 3104

45° Street Elbow



For Listings/Approval Details and Limitations, visit our website at www.anvilintl.com or contact an Anvil® Sales Representative.

FIGURE 3104 - 45° STREET ELBOW

Nominal Size	Dimensions		Approx. Wt. Each
	A	B	
<i>In. (mm)</i>	<i>In. (mm)</i>	<i>In. (mm)</i>	<i>Lbs. (kg)</i>
1/8	0.63	0.83	0.05
6	16.00	21.08	0.02
1/4	0.73	0.94	0.08
8	18.54	23.88	0.04
3/8	0.80	1.03	0.12
10	20.32	26.16	0.05
1/2	0.88	1.15	0.18
15	22.35	29.21	0.08
3/4	0.98	1.29	0.27
20	24.89	32.77	0.12
1	1.12	1.47	0.44
25	28.45	37.34	0.20
1 1/4	1.29	1.71	0.70
32	32.77	43.43	0.32
1 1/2	1.43	1.88	0.92
40	36.32	47.75	0.42
2	1.68	2.22	1.50
50	42.67	56.39	0.68

MATERIAL SPECIFICATIONS

Dimensions: Fittings: ASME B16.3
 Unions: ASME B16.39
 Bushings/Plugs: ASME B16.14

Material: ASTM A-197

Finish: Black or Hot Dip Galvanized per ASTM A153 Class A

Threads*: NPT per ASME B1.20.1

Pressure Ratings: Fittings: ASME B16.3
 Unions: ASME B16.39
 Bushings/Plugs: ASME B16.14

Pressure Testing: All malleable iron fittings are tested for through wall porosity using an air under water process.

Agency Approvals: All malleable iron fittings and unions are UL/ULC Listed and FM Approved.

* British Standard threading per BS 21 available upon request.

PROJECT INFORMATION

APPROVAL STAMP

Project:	<input type="checkbox"/> Approved
Address:	<input type="checkbox"/> Approved as noted
Contractor:	<input type="checkbox"/> Not approved
Engineer:	Remarks:
Submittal Date:	
Notes 1:	
Notes 2:	