

Leaded and Lead-Free Compression Brass Fittings

Product Specifications



Mainline® Compression Fittings are manufactured by Midland Industries Co., Inc. and are for use with copper, aluminum, and thermoplastic tubing. They are not recommended for steel tubing. Manufactured for low and medium pressure tubing connection work where excessive vibration or tube movement is not involved. Not recommended for application using gaseous media.

Meets functional required of SAE J530, J531. Tolerance of +/- 0.02 on all dimensions. Dimension data can change without notice. Please call us when dimensions are critical.

Technical Specifications

Working Pressure Ranges:

See table below for working pressures at 73°F

TUBE O.D.	1/8	3/16	1/4	5/16	3/8	7/16	1/2	5/8	3/4	7/8
THREAD SIZE-B	5/16-24	3/8-24	7/16-24	1/2-24	9/16-24	5/8-24	11/16-20	13/16-18	1-18	1-1/8-18
WORKING PRESSURE	400	400	300	300	200	200	200	150	100	75

Temperature Ranges:

-65°F to +250°F (-53°C to +121°C) range at maximum operating pressures. (Refer to tubing temperature range.)

Assembly Instructions:

1. Cut tubing to desired length.
2. Slide nut and then sleeve on tube. Threaded end of nut must face toward fitting.
3. Insert tubing into fitting body. Be sure tubing is bottomed on fitting shoulder.
4. Lubricate threads and assemble nut to fitting body.
5. Tighten nut hand tight. From that point, tighten with a wrench the number of turns indicated in the chart below.

TUBE SIZE	ADDITIONAL TURNS FROM HAND TIGHT
1/8" thru 1/4"	1-1/4"
5/16"	1-3/4"
3/8" thru 1"	2-1/4"

Warranty

Mainline® Compression Fittings will be covered by Midland Industries Co., Inc.'s limited warranty. It is as follows:

Seller warrants that goods sold hereunder are warranted to be free from defects in material and workmanship for a period of one year from the date of invoice when used according to the manufacturer's recommended usage and in an ordinary manner. Seller's liability for breach of this warranty is limited to the repair of or replacement in kind or credit, at Seller's option, of any items proved defective, in Seller's reasonable discretion, provided the allegedly defective goods are returned to Seller prepaid. All costs and expense related to shipping of any replacement parts or goods shall be paid by Seller if there is a breach of this warranty but Buyer shall pay for all installation costs. Buyer must provide prompt written notice to Seller of any breach of this warranty to obtain its benefits.



Contact your sales representative for more information or visit our website at mainlinecollection.com.

Revised 1/2/25

Leaded and Lead-Free Compression Brass Fittings

Product Specifications



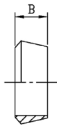
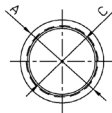
MAINLINE

No. 60 Brass Compression Sleeve Lead Free



Mainline/ Industry #	Midland Item #	Description	Min. Quantity	Carton Quantity	Weight Each (lbs)
ML60-4LF	700060-04ML	FOR 1/4" OD TUBING	10	100	0.002
ML60-6LF	700060-06ML	FOR 3/8" FLARE OD TUBING	10	100	0.003
ML60-8LF	700060-08ML	FOR 1/2" FLARE OD TUBING	10	100	0.004
ML60-10LF	700060-10ML	FOR 5/8" FLARE OD TUBING	10	100	0.006
ML60-14LF	700060-14ML	FOR 7/8" FLARE OD TUBING	10	100	0.014

No. 60-PT Delrin® Plastic Compression Sleeve



Mainline/ Industry #	Midland Item #	Description	Bag Quantity	Case Quantity	Weight Each (lbs)
ML60-PT-4	18015ML	FOR 1/4" OD TUBING	10	100	0.01
ML60-PT-6	18017ML	FOR 3/8" FLARE OD TUBING	10	100	0.02
ML60-PT-8	18018ML	FOR 1/2" FLARE OD TUBING	10	100	0.02
ML60-PT-10	18019ML	FOR 5/8" FLARE OD TUBING	10	100	0.01



Contact your sales representative for more information or visit our website at mainlinecollection.com.

Revised 1/2/25

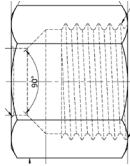
Leaded and Lead-Free Compression Brass Fittings

Product Specifications



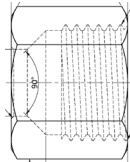
MAINLINE

No. 61 Brass Compression Nut



Mainline/ Industry #	Midland Item #	Description	Min. Quantity	Carton Quantity	Weight Each (lbs)
ML61-4	18035LML	1/4" OD COMPRESSION	10	100	0.02
ML61-6	18037LML	3/8" OD COMPRESSION	10	100	0.04
ML61-8	18039LML	1/2" OD COMPRESSION	10	100	0.04
ML61-10	18040LML	5/8" OD COMPRESSION	10	100	0.06
ML61-12	18041ML	3/4" OD COMPRESSION	10	100	0.08
ML61-14	18042ML	7/8" OD COMPRESSION	10	100	0.10

No. 61 Brass Compression Nut Lead Free



Mainline/ Industry #	Midland Item #	Description	Min. Quantity	Carton Quantity	Weight Each (lbs)
ML61-4LF	700061-04ML	1/4" OD COMPRESSION	10	100	0.014
ML61-6LF	700061-06ML	3/8" OD COMPRESSION	10	100	0.02
ML61-8LF	700061-08ML	1/2" OD COMPRESSION	10	100	0.028
ML61-10LF	700061-10ML	5/8" OD COMPRESSION	10	100	0.036
ML61-12LF	700061-12ML	3/4" OD COMPRESSION	10	100	0.074
ML61-14LF	700061-14ML	7/8" OD COMPRESSION	10	100	0.08



Contact your sales representative for more information or visit our website at mainlinecollection.com.

Revised 1/2/25

Leaded and Lead-Free Compression Brass Fittings

Product Specifications



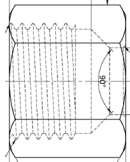
MAINLINE

No. 6061-CP Chrome Plated Brass Compression Nut



Mainline/ Industry #	Midland Item #	Description	Min. Quantity	Carton Quantity	Weight Each (lbs)
ML6061-CP-4	700661-04ML	1/4" OD COMPRESSION	10	100	0.0150
ML6061-CP-6	700661-06ML	3/8" OD COMPRESSION	10	100	0.0200
ML6061-CP-8	700661-08ML	1/2" OD COMPRESSION	10	100	0.0300

No. 61-CX Brass Compression Cap Lead Free



Mainline/ Industry #	Midland Item #	Description	Min. Quantity	Carton Quantity	Weight Each (lbs)
ML61-CX-4	700081-04ML	1/4" OD COMPRESSION	10	100	0.02
ML61-CX-6	700081-06ML	3/8" OD COMPRESSION	10	100	0.04
ML61-CX-8	700081-08ML	1/2" OD COMPRESSION	10	100	0.028
ML61-CX-10	700081-10ML	5/8" OD COMPRESSION	10	100	0.062



Contact your sales representative for more information or visit our website at mainlinecollection.com.

Revised 1/2/25

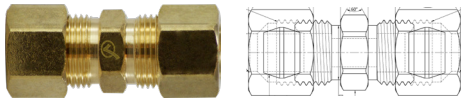
Leaded and Lead-Free Compression Brass Fittings

Product Specifications



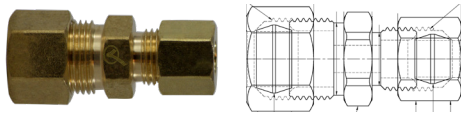
MAINLINE

No. 62 Brass Compression Union Lead Free



Mainline/ Industry #	Midland Item #	Description	Bag Quantity	Case Quantity	Weight Each (lbs)
ML62-4	700062-04ML	1/4" OD COMPRESSION	10	100	0.05
ML62-6	700062-06ML	3/8" OD COMPRESSION	10	100	0.076
ML62-8	700062-08ML	1/2" OD COMPRESSION	10	100	0.114
ML62-10	700062-10ML	5/8" OD COMPRESSION	10	100	0.157
ML62-14	700062-14ML	7/8" OD COMPRESSION	10	100	0.333

No. 62-R Brass Compression Reducing Union Lead Free



Mainline/ Industry #	Midland Item #	Description	Bag Quantity	Case Quantity	Weight Each (lbs)
ML62-R-6-4	700082-0604ML	3/8" x 1/4" OD COMPRESSION	10	100	0.068
ML62-R-8-6	700082-0806ML	1/2" x 3/8" OD COMPRESSION	10	100	0.095
ML62-R-10-6	700082-1006ML	5/8" x 3/8" OD COMPRESSION	10	100	0.117
ML62-R-10-8	700082-1008ML	5/8" x 1/2" OD COMPRESSION	10	100	0.15



Contact your sales representative for more information or visit our website at mainlinecollection.com.

Revised 1/2/25

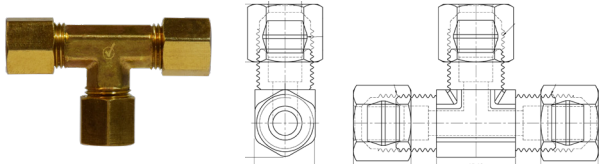
Leaded and Lead-Free Compression Brass Fittings

Product Specifications



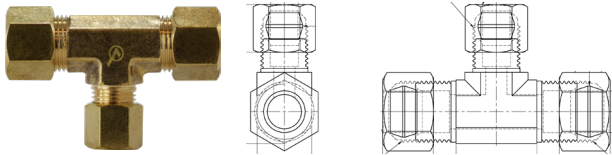
MAINLINE

No. 64 Brass Compression Tee Lead Free



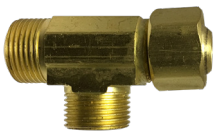
Mainline/ Industry #	Midland Item #	Description	Bag Quantity	Case Quantity	Weight Each (lbs)
ML64-4	700064-04ML	1/4" OD COMPRESSION	10	100	0.101
ML64-6	700064-06ML	3/8" OD COMPRESSION	10	100	0.135
ML64-8	700064-08ML	1/2" OD COMPRESSION	10	100	0.216
ML64-10	700064-10ML	5/8" OD COMPRESSION	10	100	0.296
ML64-14	700064-14ML	7/8" OD COMPRESSION	10	100	0.695

No. 64-R Brass Compression Reducing Tee Lead Free



Mainline/ Industry #	Midland Item #	Description	Bag Quantity	Case Quantity	Weight Each (lbs)
ML64-R-6-6-4	700084-060604ML	3/8" x 3/8" x 1/4" OD COMPRESSION	10	100	0.131
ML64-R-8-8-6	700084-080806ML	1/2" x 1/2" x 3/8" OD COMPRESSION	10	100	0.24

No. 64-TA Brass Compression x Female Swivel Tee Lead Free



Mainline/ Industry #	Midland Item #	Description	Bag Quantity	Case Quantity	Weight Each (lbs)
ML64-TA-6	700073-060606ML	3/8" x 3/8" x 3/8" OD COMPRESSION	10	100	0.098



Contact your sales representative for more information or visit our website at mainlinecollection.com.

Revised 1/2/25

Leaded and Lead-Free Compression Brass Fittings

Product Specifications



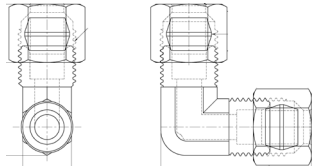
MAINLINE

No. 64 FL Brass Compression Female Flare Adapter w/ Gasket Lead Free



Mainline/ Industry #	Midland Item #	Description	Bag Quantity	Case Quantity	Weight Each (lbs)
ML6240-6-6	700093-06-06ML	3/8" OD COMP x 3/8" FEMALE FLARE	10	100	0.037

No. 65 Brass Compression 90° Elbow Lead Free



Mainline/ Industry #	Midland Item #	Description	Bag Quantity	Case Quantity	Weight Each (lbs)
ML65-4	700065-04ML	1/4" OD COMPRESSION	10	100	0.064
ML65-6	700065-06ML	3/8" OD COMPRESSION	10	100	0.088
ML65-8	700065-08ML	1/2" OD COMPRESSION	10	100	0.156
ML65-10	700065-10ML	5/8" OD COMPRESSION	10	100	0.192
ML65-14	700065-14ML	7/8" OD COMPRESSION	10	100	0.526



Contact your sales representative for more information or visit our website at mainlinecollection.com.

Revised 1/2/25

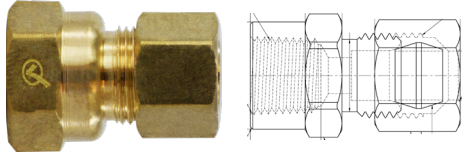
Leaded and Lead-Free Compression Brass Fittings

Product Specifications



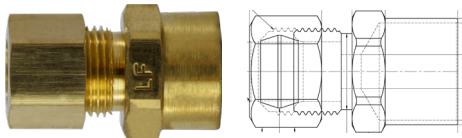
MAINLINE

No. 66 FIP Brass Compression Female Adapter Lead Free



Mainline/ Industry #	Midland Item #	Description	Bag Quantity	Case Quantity	Weight Each (lbs)
ML66-4-2	700066-0402ML	1/4" OD COMP x 1/8" FIP	10	100	0.046
ML66-4-6	700066-0406ML	1/4" OD COMP x 3/8" FIP	10	100	0.075
ML66-4-8	700066-0408ML	1/4" OD COMP x 1/2" FIP	10	100	0.105
ML66-6-2	700066-0602ML	3/8" OD COMP x 1/8" FIP	10	100	0.06
ML66-6-4	700066-0604ML	3/8" OD COMP x 1/4" FIP	10	100	0.057
ML66-6-6	700066-0606ML	3/8" OD COMP x 3/8" FIP	10	100	0.078
ML66-6-8	700066-0608ML	3/8" OD COMP x 1/2" FIP	10	100	0.086
ML66-8-6	700066-0806ML	1/2" OD COMP x 3/8" FIP	10	100	0.094
ML66-8-8	700066-0808ML	1/2" OD COMP x 1/2" FIP	10	100	0.085
ML66-10-6	700066-1006ML	5/8" OD COMP x 3/8" FIP	10	100	0.112
ML66-10-8	700066-1008ML	5/8" OD COMP x 1/2" FIP	10	100	0.127
ML66-10-12	700066-1012ML	5/8" OD COMP x 3/4" FIP	10	100	0.20
ML66-14-12	700066-1412ML	7/8" OD COMP x 3/4" FIP	10	100	0.247

No. 566 Brass Compression x Sweat Adapter Lead Free



Mainline/ Industry #	Midland Item #	Description	Bag Quantity	Case Quantity	Weight Each (lbs)
ML566-6-8	700086-0610ML	3/8" OD COMP x 1/2" NOM. SWT.	10	100	0.08



Contact your sales representative for more information or visit our website at mainlinecollection.com.

Revised 1/2/25

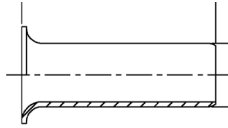
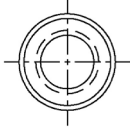
Leaded and Lead-Free Compression Brass Fittings

Product Specifications



MAINLINE

No. 67 Brass Compression Tube Insert Lead Free



Mainline/ Industry #	Midland Item #	Description	Bag Quantity	Case Quantity	Weight Each (lbs)
ML67-4	700561-04ML	FOR 1/4" OD TUBING	10	100	0.001
ML67-6	700561-06ML	FOR 3/8" FLARE OD TUBING	10	100	0.012
ML67-8	700561-08ML	FOR 1/2" FLARE OD TUBING	10	100	0.002
ML67-10	700561-10ML	FOR 5/8" FLARE OD TUBING	10	100	0.007



Contact your sales representative for more information or visit our website at mainlinecollection.com.

Revised 1/2/25

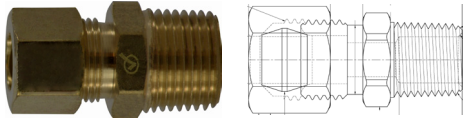
Leaded and Lead-Free Compression Brass Fittings

Product Specifications



MAINLINE

No. 68 MIP Brass Compression Male Adapter Lead Free



Mainline/ Industry #	Midland Item #	Description	Bag Quantity	Case Quantity	Weight Each (lbs)
ML68-4-2	700068-0402ML	1/4" OD COMP x 1/8" MIP	10	100	0.038
ML68-4-4	700068-0404ML	1/4" OD COMP x 1/4" MIP	10	100	0.049
ML68-4-6	700068-0406ML	1/4" OD COMP x 3/8" MIP	10	100	0.058
ML68-4-8	700068-0408ML	1/4" OD COMP x 1/2" MIP	10	100	0.091
ML68-6-2	700068-0602ML	3/8" OD COMP x 1/8" MIP	10	100	0.057
ML68-6-4	700068-0604ML	3/8" OD COMP x 1/4" MIP	10	100	0.058
ML68-6-6	700068-0606ML	3/8" OD COMP x 3/8" MIP	10	100	0.08
ML68-6-8	700068-0608ML	3/8" OD COMP x 1/2" MIP	10	100	0.10
ML68-6-12	700068-0612ML	3/8" OD COMP x 3/4" MIP	10	100	0.138
ML68-8-4	700068-0804ML	1/2" OD COMP x 1/4" MIP	10	100	0.083
ML68-8-6	700068-0806ML	1/2" OD COMP x 3/8" MIP	10	100	0.10
ML68-8-8	700068-0808ML	1/2" OD COMP x 1/2" MIP	10	100	0.113
ML68-8-12	700068-0812ML	1/2" OD COMP x 3/4" MIP	10	100	0.158
ML68-10-6	700068-1006ML	5/8" OD COMP x 3/8" MIP	10	100	0.111
ML68-10-8	700068-1008ML	5/8" OD COMP x 1/2" MIP	10	100	0.119
ML68-10-12	700068-1012ML	5/8" OD COMP x 3/4" MIP	10	100	0.171
ML68-14-8	700068-1408ML	7/8" OD COMP x 1/2" MIP	10	100	0.197
ML68-14-12	700068-1412ML	7/8" OD COMP x 3/4" MIP	10	100	0.22



Contact your sales representative for more information or visit our website at mainlinecollection.com.

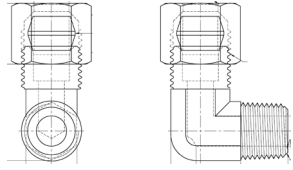
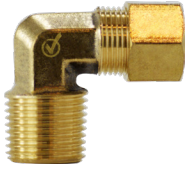
Revised 1/2/25

Leaded and Lead-Free Compression Brass Fittings

Product Specifications

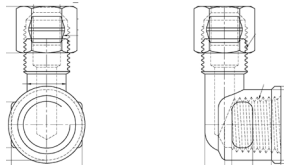
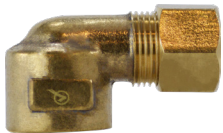


No. 69 Brass Compression 90° Male Elbow Lead Free



Mainline/ Industry #	Midland Item #	Description	Bag Quantity	Case Quantity	Weight Each (lbs)
ML69-4-2	700069-0402ML	1/4" OD COMP x 1/8" MIP	10	100	0.045
ML69-4-4	700069-0404ML	1/4" OD COMP x 1/4" MIP	10	100	0.08
ML69-4-6	700069-0406ML	1/4" OD COMP x 3/8" MIP	10	100	0.124
ML69-6-2	700069-0602ML	3/8" OD COMP x 1/8" MIP	10	100	0.066
ML69-6-4	700069-0604ML	3/8" OD COMP x 1/4" MIP	10	100	0.08
ML69-6-6	700069-0606ML	3/8" OD COMP x 3/8" MIP	10	100	0.10
ML69-6-8	700069-0608ML	3/8" OD COMP x 1/2" MIP	10	100	0.133
ML69-8-6	700069-0806ML	1/2" OD COMP x 3/8" MIP	10	100	0.137
ML69-8-8	700069-0808ML	1/2" OD COMP x 1/2" MIP	10	100	0.149
ML69-10-6	700069-1006ML	5/8" OD COMP x 3/8" MIP	10	100	0.18
ML69-10-8	700069-1008ML	5/8" OD COMP x 1/2" MIP	10	100	0.182

No. 70 Brass Compression 90° Female Elbow Lead Free



Mainline/ Industry #	Midland Item #	Description	Bag Quantity	Case Quantity	Weight Each (lbs)
ML70-4-4	700070-0404ML	1/4" OD COMP x 1/4" FIP	10	100	0.069
ML70-6-6	700070-0606ML	3/8" OD COMP x 3/8" FIP	10	100	0.12
ML70-6-8	700070-0608ML	3/8" OD COMP x 1/2" FIP	10	100	0.132
ML70-8-6	700070-0806ML	1/2" OD COMP x 3/8" FIP	10	100	0.129
ML70-8-8	700070-0808ML	1/2" OD COMP x 1/2" FIP	10	100	0.20
ML70-10-8	700070-1008ML	5/8" OD COMP x 1/2" FIP	10	100	0.156



Contact your sales representative for more information or visit our website at mainlinecollection.com.

Revised 1/2/25

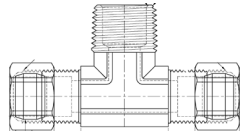
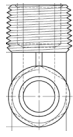
Leaded and Lead-Free Compression Brass Fittings

Product Specifications



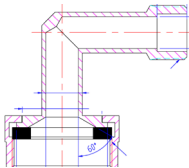
MAINLINE

No. 72 MIP Brass Compression Male Tee Lead Free



Mainline/ Industry #	Midland Item #	Description	Bag Quantity	Case Quantity	Weight Each (lbs)
ML72-6-6-4	700072-0604ML	3/8" x 3/8" OD COMP x 1/4" MIP	10	100	0.16
ML72-8-8-8	700072-0808ML	1/2" x 1/2" OD COMP x 1/2" MIP	10	100	0.279
ML72-10-10-8	700072-1008ML	5/8" x 5/8" OD COMP x 1/2" MIP	10	100	0.376

No. MLGHLC Brass Compression 90° Female Swivel Elbow x Female Garden Hose Swivel with Nut & Sleeve Lead Free



Mainline/ Industry #	Midland Item #	Description	Bag Quantity	Case Quantity	Weight Each (lbs)
MLGHLC-12-6	787469-0612ML	3/8" OD COMP x 3/4" FEMALE GHT	10	100	0.150



Contact your sales representative for more information or visit our website at mainlinecollection.com.

Revised 1/2/25