



MAINLINE®

Couplings, Lead Free Bronze 1/8" to 4"

Product Specifications

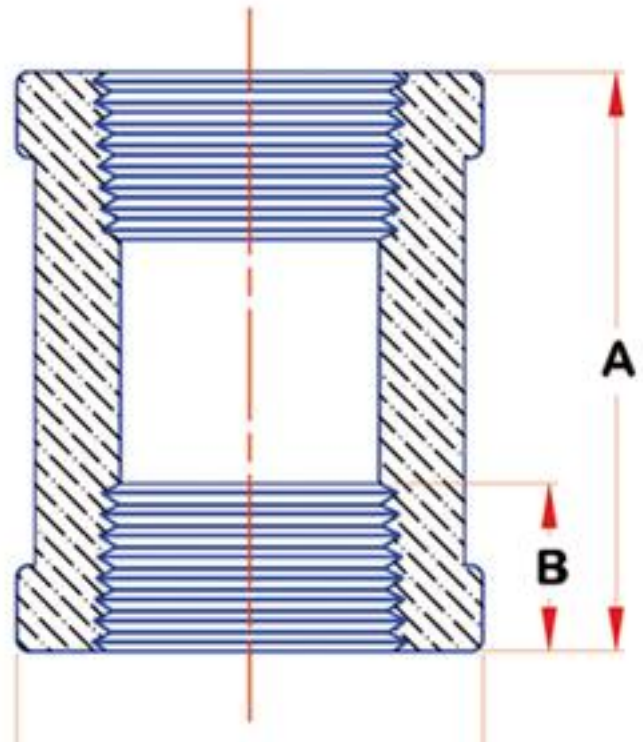
PRODUCT FEATURES

- Threaded cast bronze
- Air tested for porosity
- Lead free: $\leq .25\%$ Pb



Dimensions

Part #	Size	Pkg Qty	Approx Weight	A	B
LF64001	1/8	25	0.06	0.8	0.25
0921165403	1/4	25	0.09	0.97	0.32
0921165809	3/8	25	0.12	1.05	0.36
0921166203	1/2	25	0.17	1.29	0.43
0921166609	3/4	25	0.27	1.43	0.5
0921167003	1	25	0.44	1.68	0.58
0921167409	1-1/4	10	0.65	1.86	0.67
0921167805	1-1/2	10	0.89	1.92	0.7
0921168209	2	5	1.38	2.2	0.75
LF64024	2-1/2	-	2.75	2.88	0.92
LF64030	3	-	3.95	3.18	0.98
LF64040	4	-	6.9	3.69	1.08



Warranty

See warranty information for more details.

All dimensions listed are nominal. MAINLINE® reserves the right to make product and material changes at any time without notice.



Certified to NSF/ANSI 61

* $\leq .25\%$ Pb



Contact your sales representative for more information or visit our website at mainlinecollection.com